



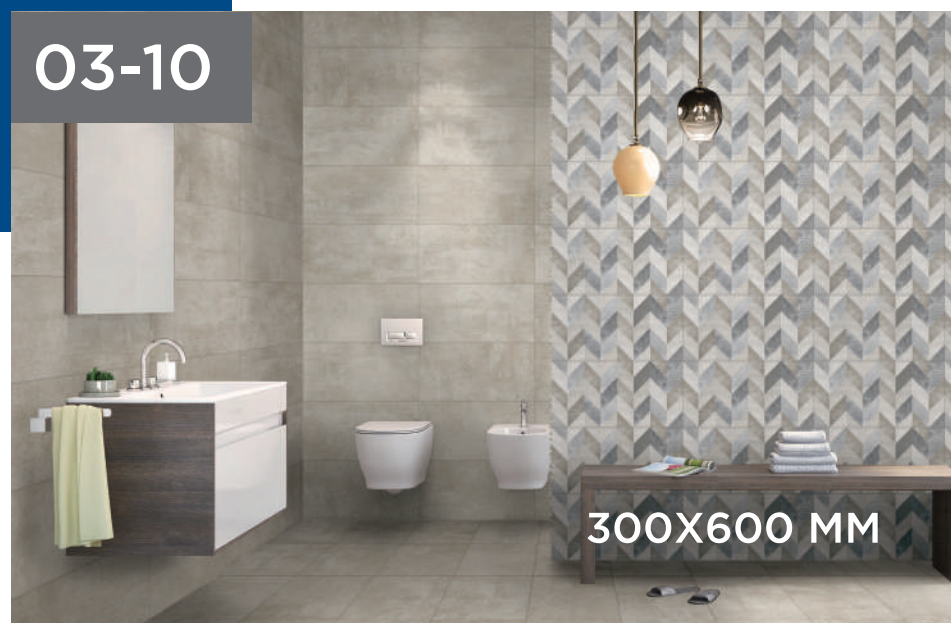
a
thing of
beauty.
a
joy
forever.

Kajaria
ETERNITY
tiles forever

GENERAL CATALOGUE

Index

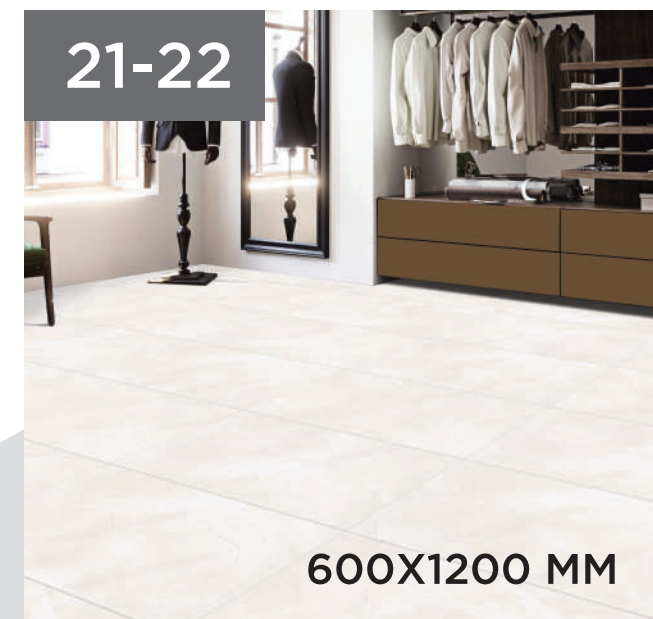
03-10



17-18



21-22



11-16



19-20



23-30



300x600 MM



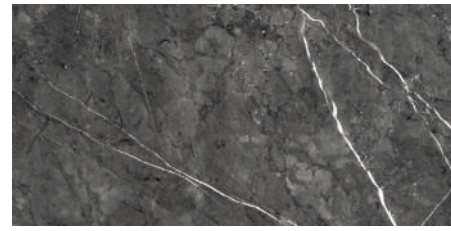
SATUARIO POLISH



CLASSICO DECOR POLISH



ZIBRA POLISH



AURA NERO POLISH



PULPIS GREY POLISH



PULPIS GRIS SUPER PREMIUM POLISH



PULPIS MARFIL POLISH



PULPIS BRONCE SUPER PREMIUM POLISH



SIERRA DECOR POLISH



NEBIA DECOR POLISH



ITALIANO BEIGE POLISH



KASHMIR MARFIL POLISH



ITALIANO MARFIL POLISH



SATUARIO (POLISH)



SIERRA DECOR (POLISH)

300x600 MM



OSLO BLANCO POLISH



ZIGGY TAUPE DECOR POLISH



OSLO OCRE POLISH



ETHOS DECOR POLISH



OSLO MARFIL POLISH



OSLO MARFIL MATT



OSLO GRIS POLISH



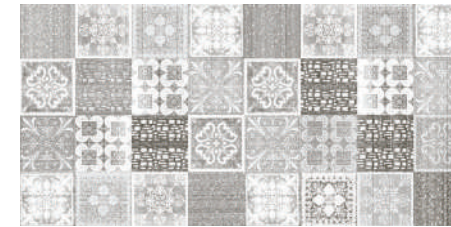
OSLO GRIS MATT



KASSEL MARFIL MATT



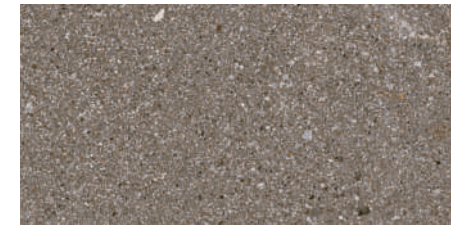
KASSEL BEIGE MATT



EDIOS GREY DECOR MATT



MOSAICO BEIGE DECOR MATT



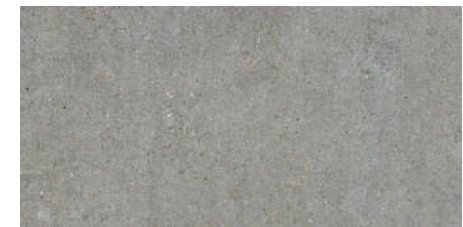
KASSEL TAUPE MATT



KASSEL BRONZE MATT



PRIVLEDGE CEMENT MATT



PRIVLEDGE GRIS MATT



MATRIX GRIS DECOR MATT



ZIGGY TAUPE DECOR (POLISH)

300x600 MM



CITY GREY MATT



CITY CEMENT MATT



CITY GREY IMPALA DECOR MATT/PUNCH



CITY CEMENT IMPALA DECOR MATT/PUNCH



BEECH BEIGE MATT



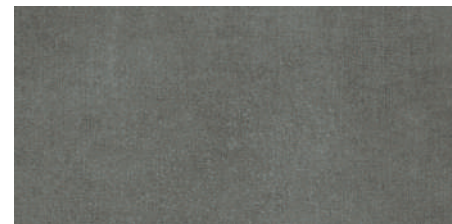
EDIOS CREMA DECOR MATT



BEECH GREY MATT



MERIDA DECOR MATT



CHICAGO CEMENT MATT



EDIOS GREY DECOR MATT



BERLIN MARFIL MATT



BERLIN GRIS MATT



CITY CEMENT & CITY CEMENT IMPALA (DECOR/MATT/PUNCH)

300x600 MM



MYRA DECOR

SPARKLE/PUNCH



CIRCO GRIS DECOR

MATT



BEECH BEIGE

MATT



BOGOTA DECOR

MATT/PUNCH



JAZZ GREY DECOR

MATT



PRIVLEDGE CEMENT

MATT



BERLIN MARFIL

MATT



ROKIO DECOR

MATT



MYRA DECOR (SPARKLE/PUNCH)



HOLI GRIS

STONE/PUNCH



HOLI MARFIL

STONE/PUNCH



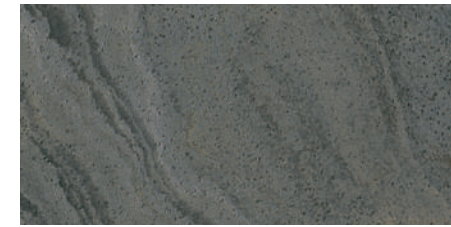
REGINA GRIS DECOR

MATT/PUNCH



REGINA MULTI DECOR

MATT/PUNCH



HOLI NERO

STONE/PUNCH



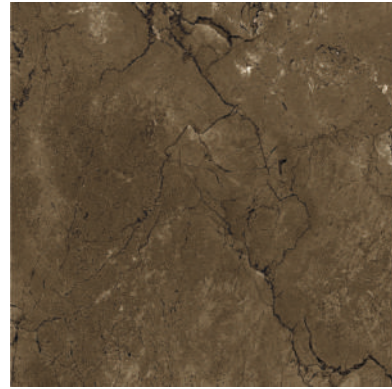
METRO BLACK

MATT

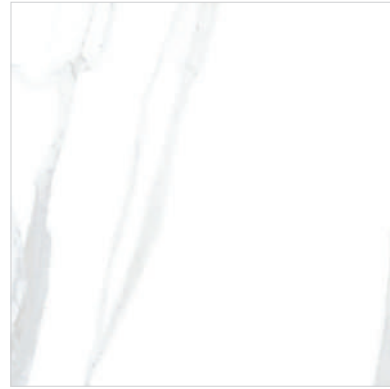


REGINA MULTI DECOR (MATT/PUNCH)

600x600 MM



MARBELLA BRONCE PREMIUM POLISH



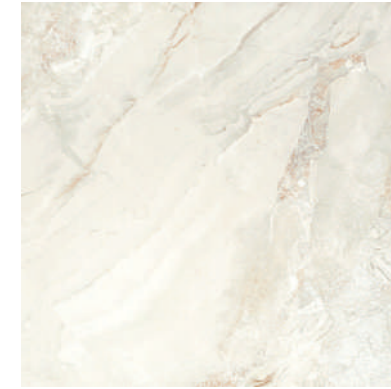
CALCUTTA WHITE POLISH



GLACIER WHITE POLISH



ITALIANO BEIGE POLISH



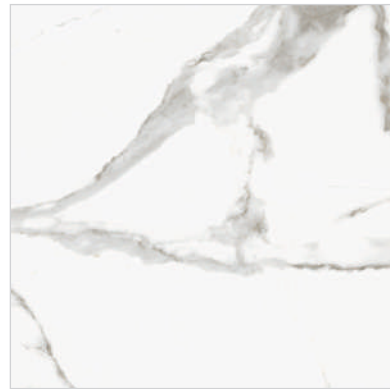
ITALIANO MARFIL POLISH



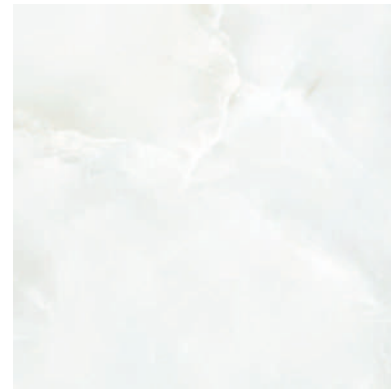
ZION MARFIL POLISH



COSMIC GREY POLISH



SATUARIO POLISH



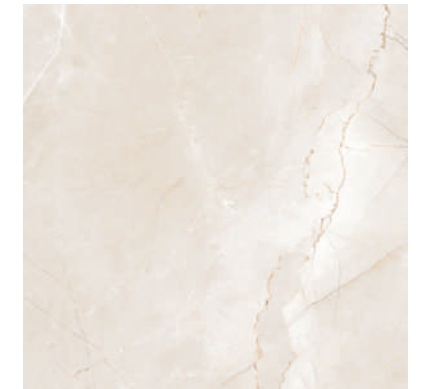
ONYX BIANCO POLISH



TRAVERTINO MARFIL POLISH



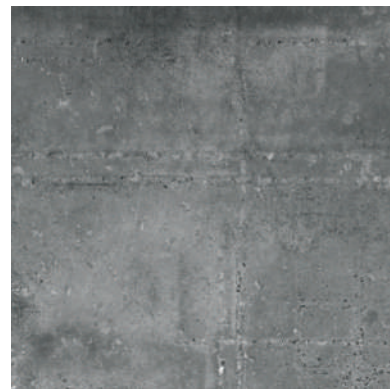
TRAVERTINO BRONCE POLISH



TITLIS POLISH



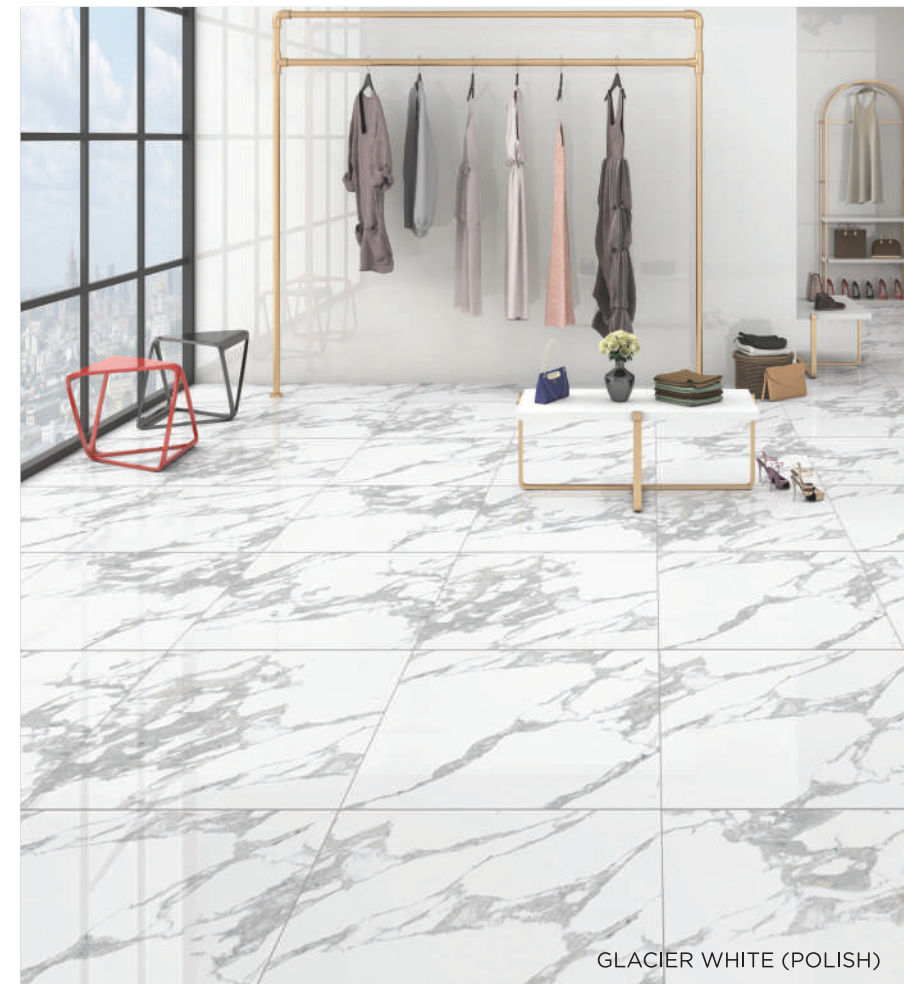
OSLO BLANCO POLISH



OSLO GRIS POLISH



OSLO MARFIL POLISH



GLACIER WHITE (POLISH)



ASTRA GREY POLISH



ATLANTIS GRIS POLISH

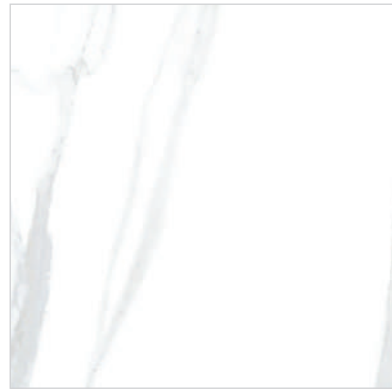


KASHMIR MARFIL POLISH



BERGEN GREY POLISH

600x600 MM



CALCUTTA WHITE SATIN MATT



GLACIER WHITE MATT



AKOYA GRIS MATT



BERGEN GREY MATT



CAIRO BEIGE MATT



CAIRO GRIS MATT



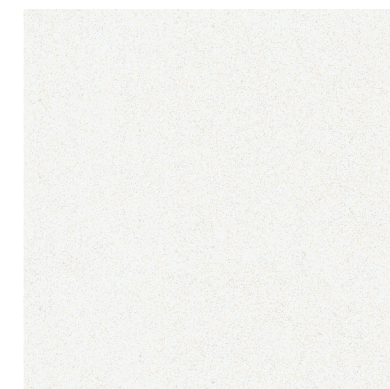
CAIRO GRIS (MATT)



KASHMIR MARFIL (MATT)



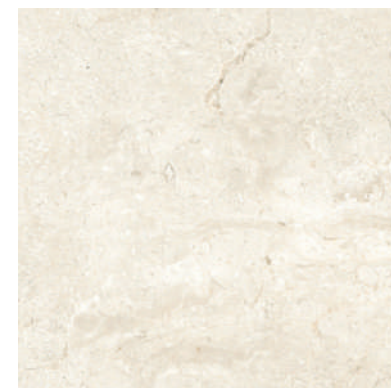
CLIFF STONE GREY MATT



CLIFF STONE MARFIL MATT



DESERT GREY MATT



KASHMIR MARFIL MATT



TRAVERTINO MARFIL SATIN MATT



OASIS BLANCO MATT

600x600 MM



OSLO BLANCO MATT



OSLO GRIS MATT



OSLO MARFIL MATT



COSMIC GREY MATT



ONYX BIANCO MATT



DYSON GREY MATT



HOLI GRIS STONE/PUNCH



HOLI MARFIL STONE/PUNCH



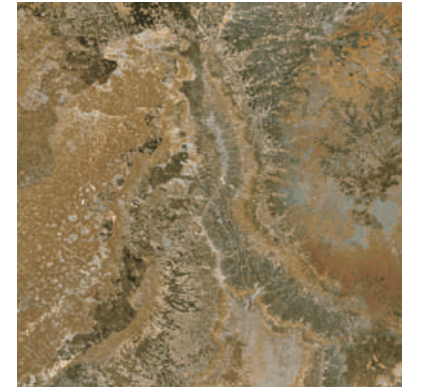
HOLI NERO STONE/PUNCH



MOON VALLEY STONE/PUNCH



PIETRA PERLA STONE/PUNCH



SILICON VALLEY STONE/PUNCH



DYSON GREY (MATT)



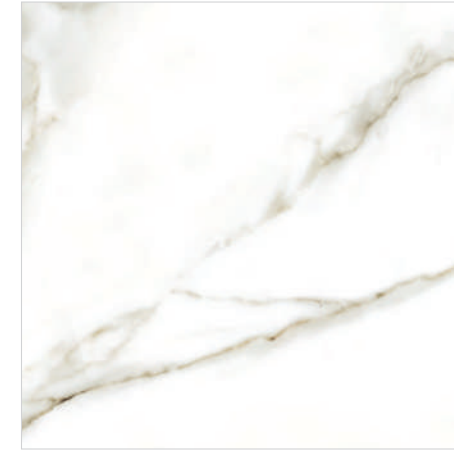
HOLI NERO (STONE/PUNCH)

800x800 MM



KASHMIR MARFIL

POLISH



MAJESTIC BLANCO

POLISH

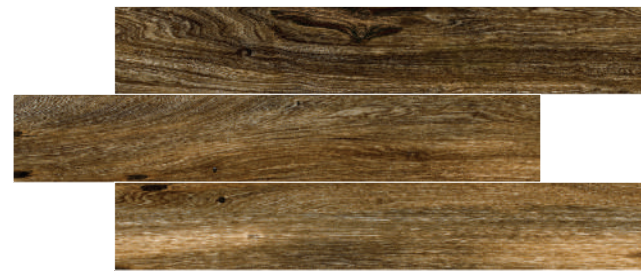


KASHMIR MARFIL (POLISH)



MAJESTIC BLANCO (POLISH)

200x1200 MM



EBONY WALNUT

WOOD/PUNCH



MANHATTAN WENGE

WOOD



TIMBER ASH

WOOD/PUNCH



TIMBER ROSE WOOD

PREMIUM
WOOD/PUNCH



TIMBER TEAK

PREMIUM
WOOD/PUNCH



VANCOUVER MAHOGANY

PREMIUM
WOOD/PUNCH



X-WOOD WENGE

PREMIUM
WOOD/PUNCH

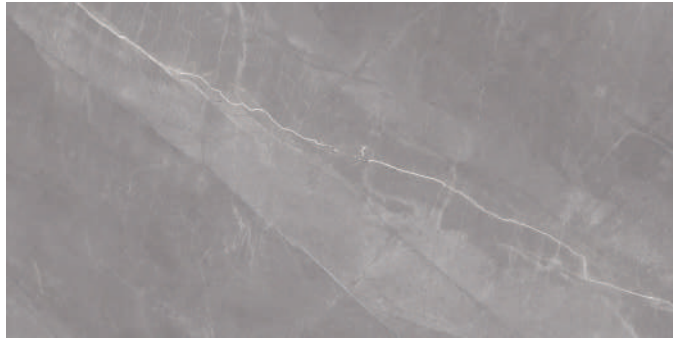


MANHATTAN WENGE (WOOD/PUNCH)



VANCOUVER MAHOGANY (PREMIUM WOOD/PUNCH)

600x1200 MM



ARMANI GRIGIO

POLISH



CALCATTÀ ROMA

POLISH



PULPIS MARFIL

LAPATTO



BLACK MARQUINA

SUPER PREMIUM MATT



LEVANTE NATURALE

POLISH



MILAN GREY

POLISH



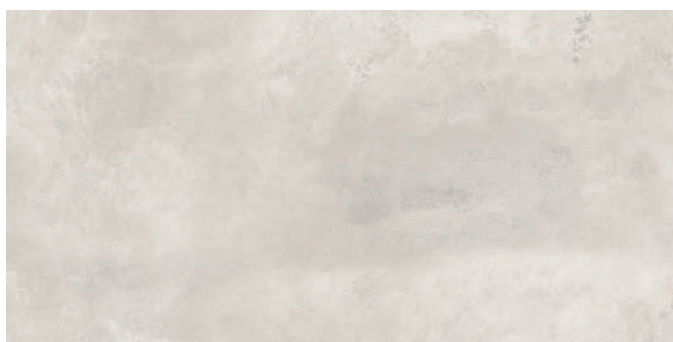
OSLO MARFIL

POLISH



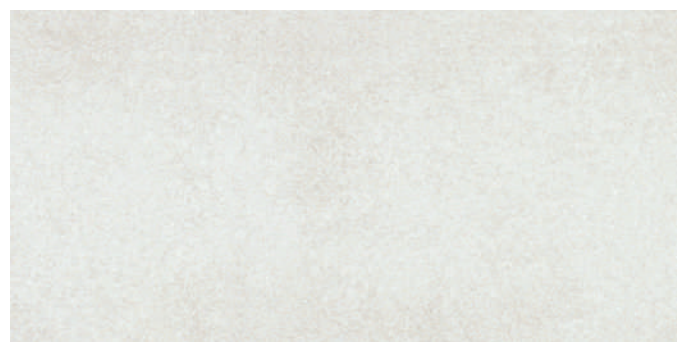
ROYAL SATUARIO

POLISH



DAZZLE MARFIL

MATT



SYDNEY MIST

MATT



PULPIS MARFIL (LAPATTO)

800x1600 MM

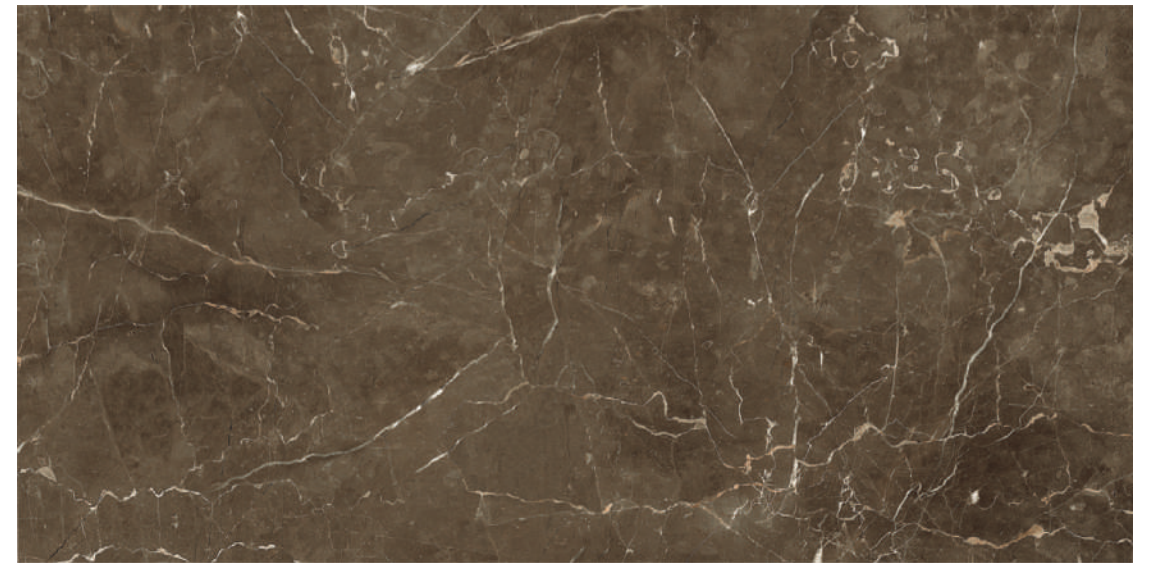


CALCUTTA (MARBLETECH)



CALCUTTA

MARBLETECH



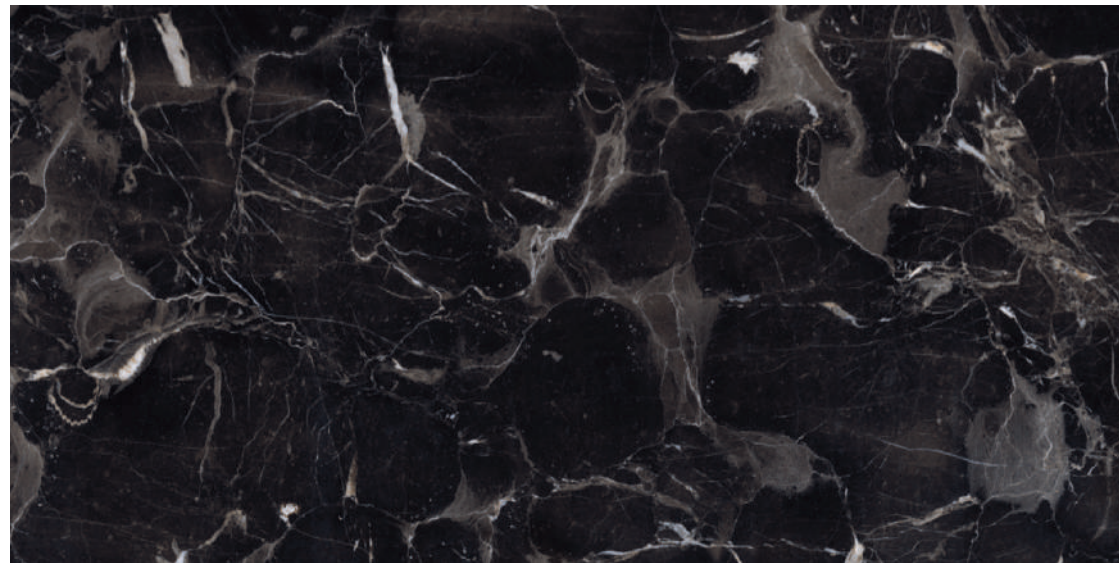
ARMANI BROWN

PREMIUM POLISH



ARMANI BROWN (PREMIUM POLISH)

800x1600 MM



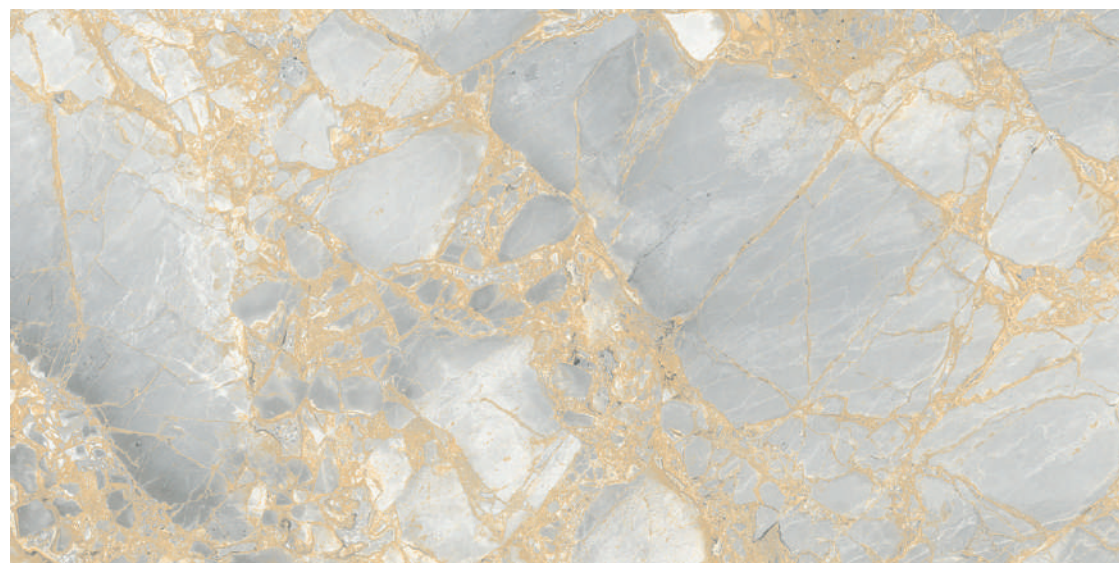
MARRON EMPEROR

PREMIUM POLISH



FANTASY GREY

PREMIUM POLISH



VERSACE GOLD

PREMIUM POLISH



MARRON EMPEROR (PREMIUM POLISH)

800x1600 MM

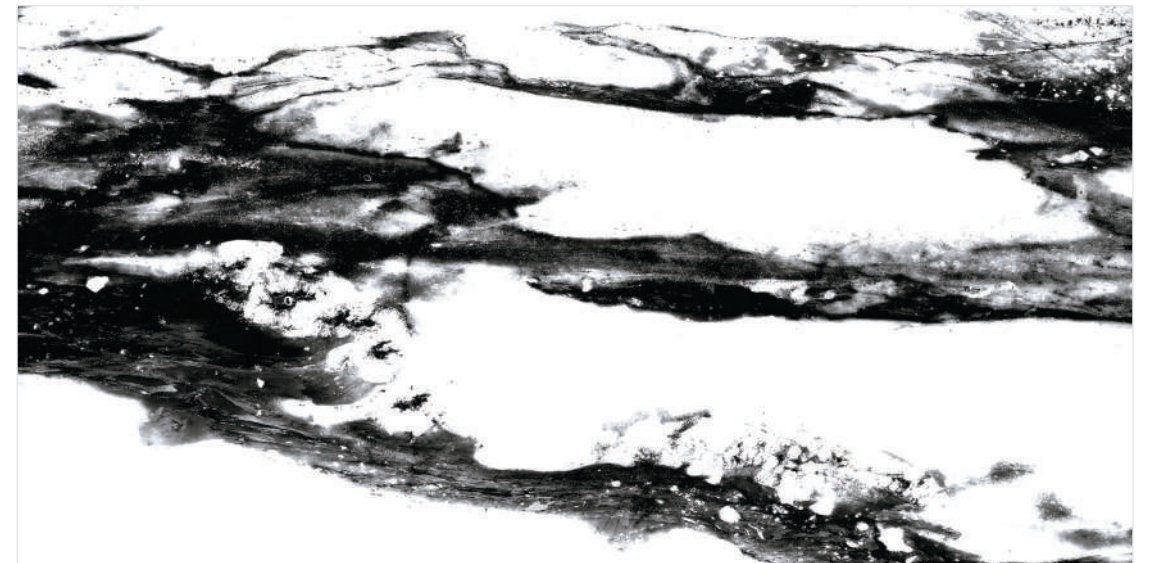


ONYX LAVA (PREMIUM POLISH)



ONYX LAVA

PREMIUM POLISH



CALCUTTA RENOIR

PREMIUM POLISH



CALCUTTA RENOIR (PREMIUM POLISH)

800x1600 MM

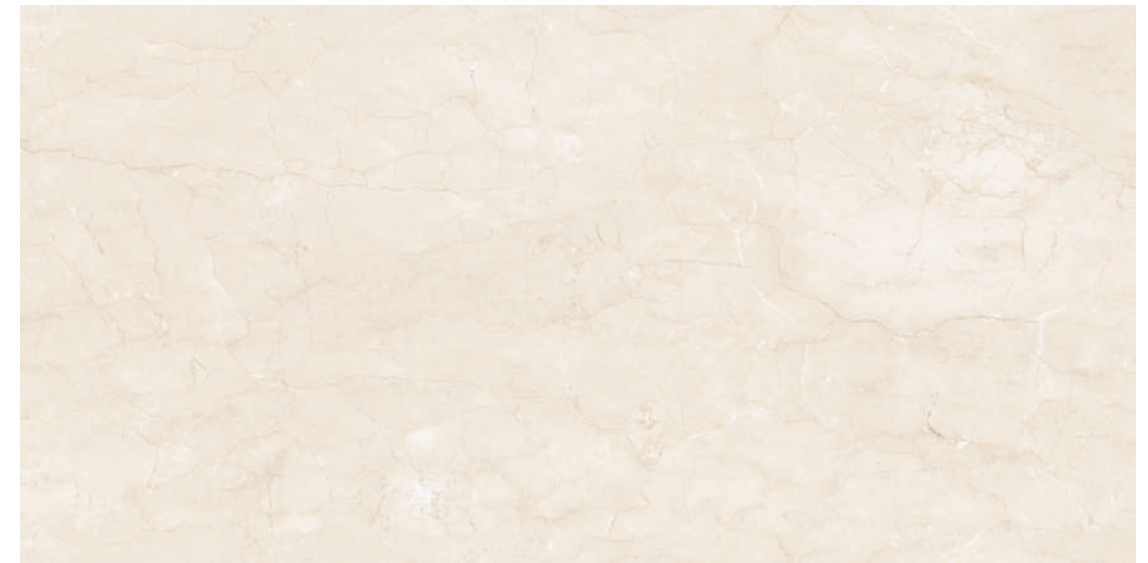


LIBERTY GREY (POLISH)



LIBERTY GREY

POLISH



MILANO BEIGE

POLISH



MILANO BEIGE (POLISH)

PACKING DETAILS

Dimensions (mm)	No. of Slabs / Box	Coverage Area
300X600	05	0.9 M ²

TECHNICAL SPECIFICATIONS

S.No	Technical Characteristics	ISO 13006:2018 Group B1b Standard's Requirement	Kajaria Eternity Tile's Specifications	Test method
1.	Deviation in length & width	± 0.3 %	± 0.10 %	ISO 10545-2
2.	Deviation in thickness	± 5.0 %	± 4.00 %	
3.	Deviation in Straightness of sides	± 0.3%	± 0.10 %	
4.	Deviation in Rectangularity	± 0.3 %	± 0.10 %	
5.	Deviation in Surface Flatness	± 0.4 %	± 0.15 %	
6.	Surface quality	95% of the tiles shall be free from visible defects	95% of the tiles shall be free from visible defects	ISO 10545-4
7.	Modulus of rupture	Avg. 30 N/mm ² , Individual Min 27 N/mm ²	≥ 30 N/mm ²	
8.	Breaking strength	Minimum 1100 N	≥ 1100 N	ISO 10545-4
9.	Bulk Density	Minimum 2.00 g/cc	≥ 2.00 g/cc	IS 13630-2
10.	Glossiness	Manufacture to state the class	Min 5 for Rustic/Matt/Satin Finish Min 90 for Polish Finish	Glossimeter 60 degrees
11.	Water Absorption	0.5 < Eb ≤ 3 %	≤ 1.00 %	ISO 10545-3
12.	Resistance to surface abrasion of Glazed tiles	Report abrasion class and cycles passed	PEI-Class III to Class IV	ISO 10545-7
13.	Thermal expansion from ambient temperature to 100 ° C	Test method available	7x10 ⁻⁶ K ⁻¹ Maximum	ISO 10545-8
14.	Thermal shock resistance	Test method available	10 cycles Minimum	ISO 10545-9
15.	Moisture expansion	Maximum 0.02 Millimeter/metre Test method available	Maximum 0.02 millimeter/metre	IS 13630-3 ISO 10545-10
16.	Crazing resistance (Glazed Tiles)	Required	Passes 4 cycles at 7.5 kg/cm ²	ISO 10545-11
17.	Frost resistance	Required	100 cycles Minimum	ISO 10545-12
18.	Resistance to Household Chemicals & Swimming Pool Salts #	Minimum GB	Min GB	ISO 10545-13
19.	Resistance to low & high concentration of acids & alkalis #	Manufacturer to state classification	Min GLB,GHB	ISO 10545-13
20.	Stain resistance**	Min Class 3	Min Class 3	ISO 10545-14
21.	Slipperiness	Test method available	≥ R-10 for Rustic/Matt/Satin Finish ≥ R-9 for Polish Finish	DIN 51130:2014
22.	Co-efficient of friction	Manufacture to state the clas	> 0.34 for Rustic/Matt/Satin Finish > 0.20 for Polish Finish	ISO 10545-17
23.	Scratch hardness of surface(Moh's scale)	Test method available	Min 5	EN 101
24.	Impact Resistance	Test method available	No identification of cracking	ISO 10545-5

** Vitrified tiles have resistance to most of the stains / chemicals but, it is recommended to take due care while laying and for day-to-day maintenance.
Resistance to acids & alkalies (Exception of Hydrofluoric Acid & its Compounds)

- Colours in the catalogue are as accurate as printing process allows. Please check actual tile sample before making the final selection.
- Sizes mentioned in the catalogue are nominal sizes only.
- No claim will be entertained once the tiles are fixed.
- For better laying, please follow the instructions on the packaging box.
- In case it is required to lay the tiles on wall or floor in STAGGERED PATTERN, then always lay them in Overlap 20:80 ratio, as shown in VISUAL 1 instead of Brick pattern (overlap 50:50 ratio), as shown in VISUAL 2.
- Please make sure to check the shade/finish with the sales agent/dealer before making the final purchase because there might be variation in actual finish and that shown in the catalogue. The company will not bear any loss in such case.



VISUAL 1



VISUAL 2

PACKING DETAILS

Dimensions mm	No of Slabs / Box	Coverage Area
800X1600	02	2.56 M ²
600X1200	03	2.16 M ²
200X1200	06	1.44 M ²
800X800	03	1.92 M ²
600X600	04	1.44 M ²

TECHNICAL SPECIFICATIONS

S.No	Technical Characteristics	* IS 15622:2017, *EN 14411:2016 & ISO 13006:2018 Group BIa (Annex G) Standard's Requirement	Kajaria Eternity Tile's Specifications	Test method
1.	Deviation in length & width	± 0.1 % ± 0.6 %/ ± 0.3 %	± 0.10 %	IS 13630-1 EN ISO 10545-2
2.	Deviation in thickness	± 5.0 %	± 4.00 %	IS 13630-1 EN ISO 10545-2
3.	Deviation in Straightness of sides	± 0.1 % ± 0.5 %/± 0.3 %	± 0.10 %	IS 13630-1 EN ISO 10545-2
4.	Deviation in Rectangularity	± 0.1 % ± 0.5 %/± 0.3 %	± 0.10 %	IS 13630-1 EN ISO 10545-2
5.	Deviation in Surface Flatness	± 0.5 % ± 0.5 %/± 0.4 %	± 0.15 %	IS 13630-1 EN ISO 10545-2
6.	Surface quality	95% of the tiles shall be free from visible defects	95% of the tiles shall be free from visible defects	IS 13630-1 EN ISO 10545-2
7.	Modulus of rupture	Avg. 35 N/mm ² , individual Min 32 N/mm ²	≥ 40 N/mm ²	IS 13630-6 / EN ISO 10545-4
8.	Breaking strength	Minimum 1300 N	≥ 1600 N	IS 13630-6 / EN ISO 10545-4
9.	Bulk Density	Minimum 2.20 g/cc	≥ 2.25 g/cc	IS 13630-2
10.	Glossiness	Manufacture to state the class	Min 5 for Rustic/Matt/Satin Finish Min 90 for Polish Finish	Glossimeter 60 degrees
11.	Water Absorption	≤ 0.08 %, Individual Max 0.1% ≤ 0.5 %, Individual Max. 0.6 %	≤ 0.08 %, Individual Max 0.1% ≤ 0.3 % (Only for 40x80 & 13x80 cm)	IS 13630-2 / EN ISO 10545-3
12.	Resistance to surface abrasion of Glazed tiles	Minimum Class II Report abrasion class and cycles passed	PEI-Class III to Class IV	IS 13630-11 EN ISO 10545-7
13.	Thermal expansion from ambient temperature to 100 ° C	Test method available	6x10 ⁻⁶ K ⁻¹ Maximum	IS 13630-4 EN ISO 10545-8
14.	Thermal shock resistance	10 cycles Minimum Test method available	10 cycles Minimum	IS 13630-5 EN ISO 10545-9
15.	Moisture expansion	Maximum 0.02 Millimeter/Metre Test method available	Nil	IS 13630-3 EN ISO 10545-10
16.	Crazing resistance (Glazed Tiles)	Passes 4 cycles at 7.5 kg/cm ² Required	Passes 4 cycles at 7.5 kg/cm ²	IS 13630-9 EN ISO 10545-11
17.	Frost resistance	Required	100 cycles Minimum	IS 13630-10 EN ISO 10545-12
18.	Resistance to Household Chemicals & Swimming Pool Salts #	Minimum Class AA Minimum GB	Minimum Class AA Minimum GB	IS 13630-8 EN ISO 10545-13
19.	Resistance to low & high concentration of acids & alkalis #	Manufacturer to state classification	Minimum Class AA Minimum GLB,GHB	IS 13630-8 EN ISO 10545-13
20.	Stain resistance**	Minimum Class 1 Minimum Class 3	Minimum Class 1 Minimum Class 3	IS 13630-8 EN ISO 10545-14
21.	Slipperiness	Test method available	≥ R-9 to R-10 for Rustic/Matt/Satin Finish ≥ R-9 for Polish Finish	DIN 51130:2014
22.	Co-efficient of friction	Manufacture to state the class	≥ 0.32 for Rustic/Matt/Satin Finish > 0.20 for Polish Finish	ISO 10545-17
23.	Scratch hardness of surface(Moh's scale)	Minimum 5 Test method available	Min 6 for Rustic/Matt/Satin Finish Min 5 for Polish/Marbletech Finish	IS 13630-13 EN 101
24.	Impact Resistance	Minimum 0.55 Test method available	Min 0.55 & No identification of cracking	IS 13630-14 EN ISO 10545-5

Resistance to acids & alkalies (Exception of Hydrofluoric acid & its compounds)

** Vitrified tiles have resistance to most of the stains / chemicals but, it is recommended to take due care while laying and for day-to-day maintenance.

* Applicable in Gailpur plant only.

- Colours in the catalogue are as accurate as printing process allows. Please check actual tile sample before making the final selection.
- Sizes mentioned in the catalogue are nominal sizes only.
- No claim will be entertained once the tiles are fixed.
- For better laying, please follow the instructions on the packaging box.
- In case it is required to lay the tiles on wall or floor in STAGGERED PATTERN, then always lay them in Overlap 20:80 ratio, as shown in VISUAL 1 instead of Brick pattern (overlap 50:50 ratio), as shown in VISUAL 2.

Please make sure to check the shade/finish with the sales agent/dealer before making the final purchase because there might be variation in actual finish and that shown in the catalogue. The company will not bear any loss in such case.



VISUAL 1



VISUAL 2

Kajaria
ETERNITY
tiles forever

CAMPBELLFIELD SHOWROOM
31A Metrolink Circuit, Campbellfield, VIC, 3061

Tel: +61 3 8759 5043
Email: info@kajariatiles.com.au
Website : <https://kajariatiles.com.au/>